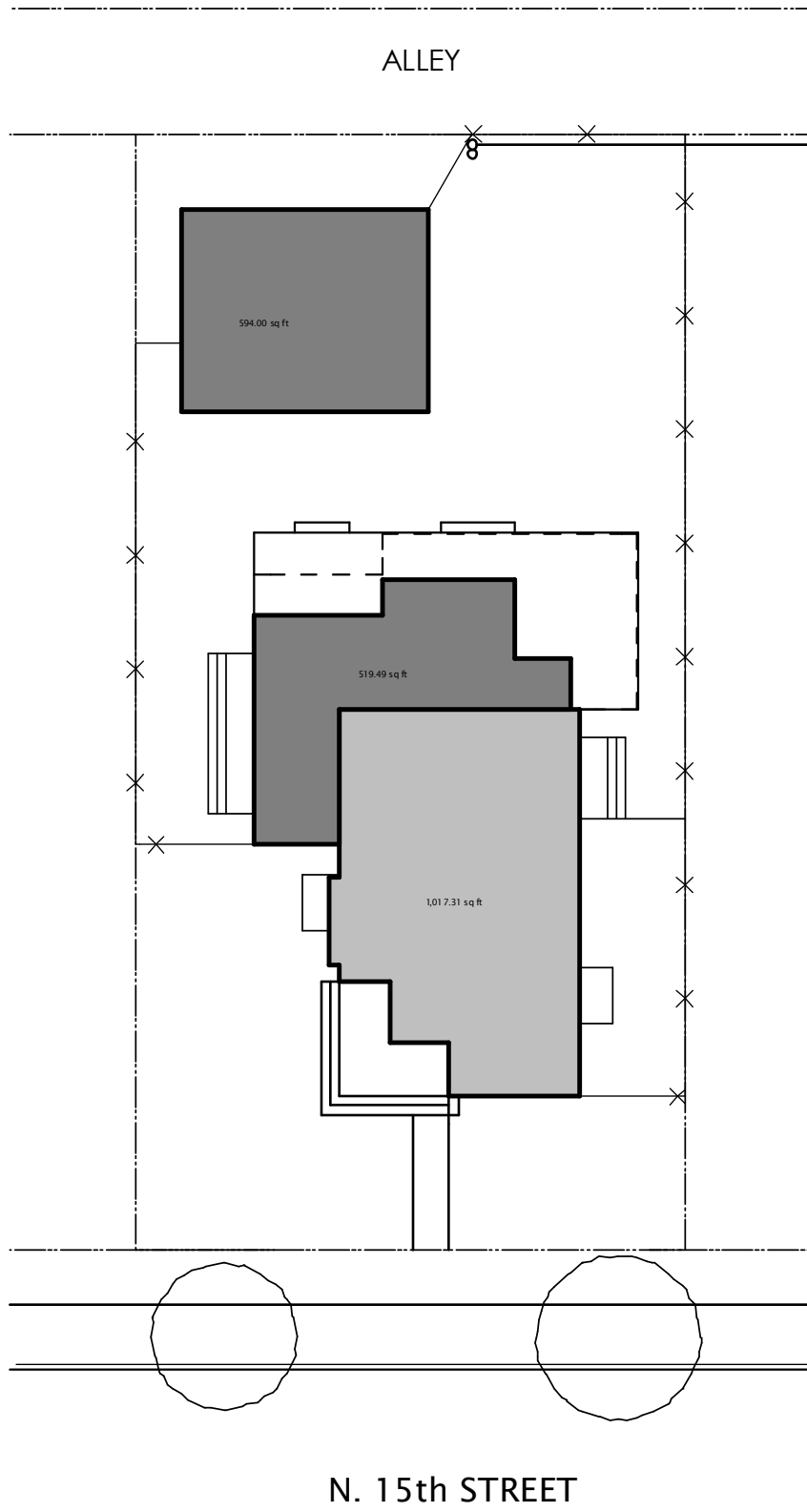


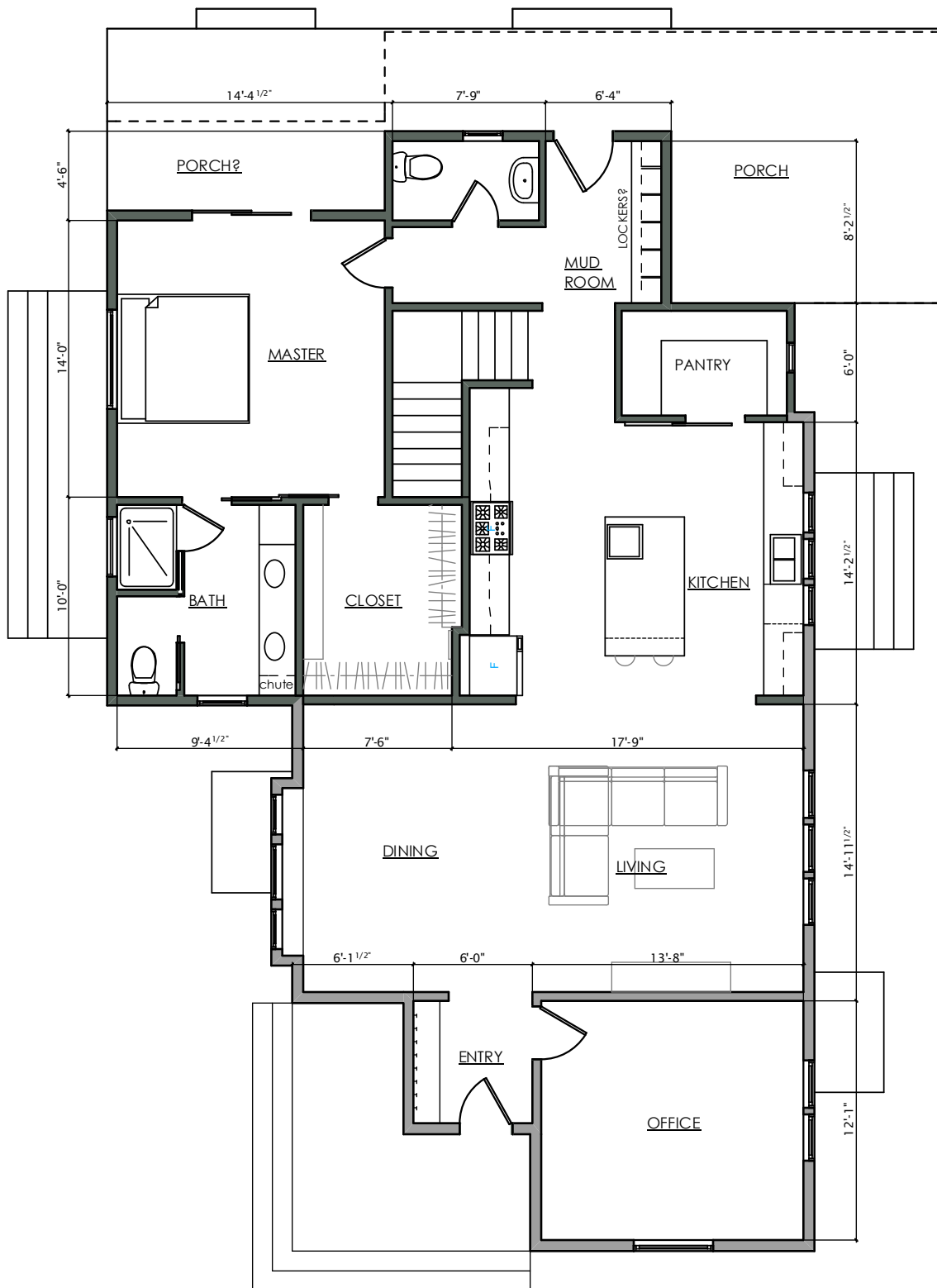
AMY ALLGEYER
Architect, Inc.



PROPOSED SITE PLAN
1" = 20'-0"

Joffe/KAI LLC
1004 N. 15th Street
PO Box 7692 | Boise ID 83702 | Phone: 208-724-6309

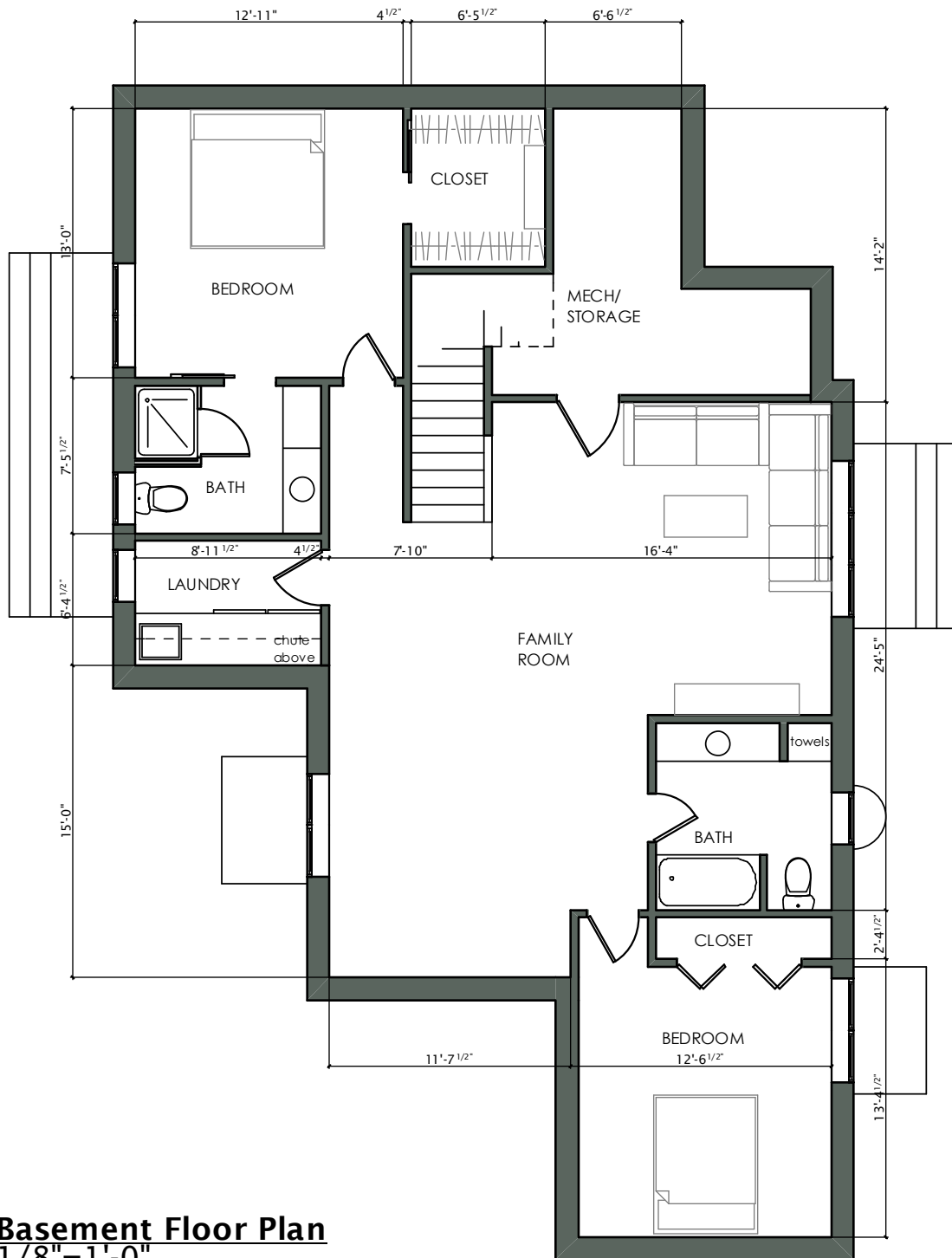
AMY ALLGEYER
Architect, Inc.



Main Floor Plan
 $1/8" = 1'-0"$

Joffe/KAI LLC
1004 N. 15th Street
PO Box 7692 | Boise ID 83702 | Phone: 208-724-6309

AMY ALGEYER Architect, Inc.



Basement Floor Plan
 $\frac{1}{8}'' = 1'-0''$